

Para World Sailing Championships 2018

Sail Sheboygan, SEAS &
Sheboygan Yacht Club

16 - 22 September

Sailing Instructions



USA 2018
Para
World Sailing
Championships



Sail Sheboygan, SEAS & Sheboygan Yacht Club
Sheboygan, Wisconsin

Sailing Instructions

1 RULES

- 1.1 The regatta will be governed by the rules as defined in *The Racing Rules of Sailing (RRS)*.
- 1.2 No national prescriptions will apply.
- 1.3 RRS Appendix P, Special Procedures for Rule 42, will apply.
- 1.4 The following rules, procedures and systems will apply:
 - 1.4.1 Para-Classification Rules for World Sailing January 2018 as amended by the NOR.
 - 1.4.2 The Para World Sailing Race Management Manual (RMM) Revised draft January 11, 2017 will apply as amended by the Notice of Race.
 - 1.4.3 World Anti-Doping Code Regulations will apply. Competitors are reminded of the World Sailing Rules and Regulations concerning the use of banned methods and substances, which are contained in the World Sailing Anti-Doping Code. Drug testing may take place during this event. Additional information is available at <https://www.wada-ama.org>.
 - 1.4.4 World Sailing Equipment Inspection Regulations and Support Person Regulations (including coach boats) will apply.
 - 1.4.5 2.4m OD only: The 2.4m OD Class Rules
 - 1.4.6 Hansa 303 class only: Hansa 303 Class rules
 - 1.4.7 RS Venture Keel class only: RS Venture Supplied Equipment Regulations.
- 1.5 Decisions of the International Jury will be final as provided in RRS 70.5.
- 1.6 A boat shall neither make radio transmissions while racing nor receive radio communications not available to all boats, except in an emergency or when using equipment provided by the race committee. This restriction also applies to mobile telephones.
- 1.7 If there is a conflict between languages the English text will take precedence.

2 NOTICES TO COMPETITORS

- 2.1 Notices to competitors will be posted on the official notice board located at north dining hall windows of the Sheboygan Yacht Club.
- 2.2 Notices to competitors may also be posted on yachtscoring.com and a satellite board located at the Harbor Centre Marina, but in the event of conflict between sources, the official notice board in described 2.1 will govern.

3 CHANGES TO SAILING INSTRUCTIONS

- 3.1** Changes to the sailing instructions will be posted no later than two hours before the scheduled time of the first race affected.
- 3.2** Any change to the sailing instructions will be approved by the Principal Race Officer and the World Sailing Technical Delegate.
- 3.3** When a visual signal is displayed over an area or event flag, the signal applies only to that area or event. This changes the Race Signals preamble

4 SIGNALS MADE ASHORE

- 4.1** Signals made ashore will be displayed at the flagpole on the grounds between the Sheboygan Youth Sailing Club and the Sheboygan Yacht Club overlooking the floating docks.
- 4.2** When flag AP is displayed ashore, '1 minute' is replaced with 'not less than 60 minutes' in the race signal AP.
- 4.3** [SP] Flag AP over H displayed ashore means 'Boats shall not leave the harbour. Wait for further instructions.' This adds to Race Signals AP over H.

5 CODE OF CONDUCT

- 5.1** Competitors and support persons shall comply with any reasonable request from a regatta official.
- 5.2** Competitors shall handle any boats or equipment provided by the organizing authority with proper care and seamanship, and in compliance with any written instructions.
- 5.3** [SP] Boats not racing shall avoid the area where boats are racing and any official boats.
- 5.4** [SP] Boats that are on a Course Area to which they are not assigned shall avoid the area where boats are racing and any official boat

6 SCHEDULE OF TRAINING

- 6.1** Boats will be available for training starting from September 15 at 10:00 until September 16 at 16:00 (end of training)
- 6.2** A training schedule form to reserve a daily training slot will be available at the Race Office from September 14
- 6.3** Daily training slot will be limited to max.2 hours per sailors
- 6.4** During the second training day preference will be given to sailor who have not carried out training the first day.

7 SCHEDULE OF RACES

- 7.1 Racing will take place on September 18, 19, 20, 21, and 22.
- 7.2 The number of races per day will vary depending on conditions. It is the intension of the race committee to complete 3 races per day for the 2.4m OD, 4 races for the Hansa 303, and as many races as possible each day for the RS Venture fleet not to exceed 6 races per day.
- 7.3 The scheduled time of the first warning signal for the first race each day is 1000.
- 7.4 To alert boats that a race or sequence of races will begin soon, the orange starting line flag will be displayed with one sound at least five minutes before a warning signal is made.
- 7.5 September 22nd will be finals for all 3 classes. Medal race format for 2.4m OD, finals for the Hansa 303 and RS Venture fleets.
- 7.6 On the last day of the regatta no warning signal will be made after 1500.

8 FORMAT OF RACING

- 8.1 The 2.4m OD events will consist of an opening series and 1 medal race
- 8.2 **Medal Race**
 - 8.2.1 A medal race will be scheduled for the 2.4m OD with 3 or more opening series races completed.
 - 8.2.2 The ten boats ranked highest in the opening series will be assigned to compete in the medal race.
 - 8.2.3 Assignments to a medal race will be based on the ranking available at 0900 on the day of the medal race. The protest committee may extend the time limit.
- 8.3 The Hansa 303 and RS Venture events will consist of a Qualifying series and Final series.
- 8.4 The number of fleets for an event is shown in Appendix D and may be changed until 21:00 on the day prior to the first scheduled race.
- 8.5 The RS Venture Connect Initial assignments will be made by a seeding committee appointed by the race committee. These assignments will be posted by 2100 on the day before the first scheduled race.
- 8.6 The RS Venture Connect assignmentst will be reassigned each day of racing.
- 8.7 The Hansa 303 men will be assigned to Yellow, Blue, or Red as nearly as possible equal size and ability. Initial assignments will be made by a seeding committee appointed by the race committee. These assignments will be posted by 2100 on the day before the first scheduled race.

- 8.8 The Hansa 303 men will be reassigned to fleets after each day of racing, except if on

the first day fewer than two races are completed by all fleets. If all fleets have completed the same number of races boats will be reassigned on the basis of their ranks in the series. If all fleets have not completed the same number of races, the series scores for reassignment will be calculated for those races numbered in order of completion, completed by all fleets. Reassignments will be made as follows:

Rank in Series	Fleet Assignment
First	Yellow
Second	Blue
Third	Red
Fourth	Red
Fifth	Blue
Sixth	Yellow
Seventh	Yellow
Eight	Blue
Continue pattern	

8.9 Additional information in Appendix D.

9 CLASS FLAGS

Class flags will be:

Class	Flag
2.4m OD	2.4 on white background
Hansa 303	303 on white background
RS Venture	RS on white background

10 RACING AREAS

Appendix A shows the location of racing areas.

11 THE COURSES

- 11.1 The diagrams in Appendix B show the courses, including the approximate angles between legs, the order in which marks are to be passed, and the side on which each mark is to be left.
- 11.2 If only one Gate mark is set boats shall round the single mark to port.
- 11.3 The 2.4m OD course will be Windward/Leeward courses with a gate.
- 11.4 The Hansa 303 course will be short Windward/Leeward with a gate.
- 11.5 Courses will not be shortened this changes RRS 32.

12 MARKS

12.1 2.4m OD

12.1.1 Original windward mark will be large orange cylinder. An offset mark will be an orange ball.

12.1.2 New marks, as provided in instruction 14, will be yellow tetrahedrons.

12.2 Hansa 303

12.2.1 Original marks will be orange tetrahedrons. An offset mark will be an orange ball.

12.2.2 New marks, as provided in instruction 14, will be yellow tetrahedrons.

12.3 RS Venture

12.3.1 Original marks will be orange tetrahedrons. An offset mark will be an orange ball.

12.3.2 New marks, as provided in instruction 14, will be yellow tetrahedrons.

13 THE START

13.1 Races will be started by using RRS 26 with the warning signal made 5 minutes before the starting signal.

13.2 The starting line for the 2.4m OD fleet will be between a staff displaying an orange flag on the Signal boat and a yellow tetrahedron.

13.3 The starting line for the Hansa 303 and RS Venture fleets will be between a staff displaying an orange flag on the signal boat and a yellow tetrahedron.

13.4 [SP] Boats whose warning signal has not been made shall avoid the starting area during the starting sequence for other races.

14 CHANGE OF THE NEXT LEG OF THE COURSE

To change the next leg of the course, the race committee will lay a new mark (or move the finishing line) and remove the original mark as soon as practicable. When a new mark is laid the offset mark will not be used. When in a subsequent change a new mark is replaced, it will be replaced by an original mark.

15 THE FINISH

The finishing line for all classes will be between the staff displaying a blue flag on the committee boat and a white ball at the other end of the finish line.

16 PENALTY SYSTEM

- 16.1 RRS 44.1 and RRS Appendix P2.1 are changed so that the Two-Turns Penalty is replaced by the One-Turn Penalty.
- 16.2 RRS Appendix P will apply as changed by instruction 16.1.
- 16.3 In RRS 44.2 insert after the first sentence: However if Mark 1a is set, a boat may delay taking a penalty for an incident in the zone around Mark 1 or on the leg between Mark 1 and Mark 1a, until she has passed Mark 1a.

17 TIME LIMITS AND TARGET TIMES

- 17.1 Time limits and target times are as follows:

Class	Race Time Limit	Mark 1 Time Limit	Target Time
2.4m OD	75 min	20 min	30 min
Hansa 303	45 min	10 min	15-18 min
RS Venture	45 min	10 min	15-18 min

- 17.2 If no boat has passed Mark 1 within the Mark 1 time limit the race will be abandoned. Failure to meet the target time will not be grounds for redress. This changes rule 62.1(a).
- 17.3 Boats failing to finish within 15 minutes after the first boat sails the course and finishes will be scored Did Not Finish without a hearing per RRS 28. This changes rules 35, A4 and A5.

18 PROTESTS AND REQUESTS FOR REDRESS

- 18.1 Protest forms are available at the race office, located at the Commodore's Cove. Protests and requests for redress or reopening shall be delivered there within the appropriate time limit.
- 18.2 For each class, the protest time limit is 60 minutes after the race committee signal boat for their class docks.
- 18.3 Notices will be posted no later than 30 minutes after the protest time limit to inform competitors of hearings in which they are parties or named as witnesses. Hearings will be held in the protest room, located at the Kids Cove, beginning at the time posted.
- 18.4 Notices of protests by the race committee or protest committee will be posted to inform boats under rule 61.1(b).
- 18.5 A list of boats that, under instruction 14.3, have been penalized for breaking rule 42 will be posted.
- 18.6 For breaches of SI marked [SP], the race committee may apply a standard penalty without a hearing. A list of these breaches and the associated standard penalties will

be posted on the Official Notice Board. However, the race committee may protest a boat when they consider the standard penalty to be inappropriate. A boat that has been penalised with a standard penalty can neither be protested for the same incident by another boat nor can another boat request redress for this race committee action. This changes RRS 60.1 and 63.1.

- 18.7** On the last scheduled day of racing a request for reopening a hearing shall be delivered
- (a) within the protest time limit if the requesting party was informed of the decision on the previous day;
 - (b) no later than 30 minutes after the requesting party was informed of the decision on that day.
- This changes RRS 66.
- 18.8** On the last scheduled day of racing a request for redress based on a protest committee decision shall be delivered no later than 30 minutes after the decision was posted. This changes RRS 62.2.
- 18.9** Protest regarding classification may be filed with the on-site classifier not later than "first appearance". However, any protest will not be decided at the regatta.

19 SCORING

- 19.1** The Low Point System of RRS Appendix A will apply.
- 19.2** One race is required to be completed to constitute a regatta.
- 19.3** When fewer than three opening series races have been completed, a boat's series score will be the total of her race scores. When three or more opening series races have been completed, a boat's score will be the total of her race scores excluding her worst score. However, the score from any medal race will not be excluded. This change RRS A2.
- 19.4** A boat starting later than 4 minutes after her starting signal will be scored Did Not Start. This changes RRS A4 and A5.
- 19.5** For the medal race, the number of boats assigned to the medal race.
- 19.6** For the medal race, RRS A4.1 is changed so that the points are doubled. RRS A4.2 is changed so that the scores are based on the number of boats assigned in that race and then doubled.
- 19.7** For boats assigned to compete in a medal race, ties will be broken by the medal race score. This changes RRS A8. For tied boats with the same points score in the medal race, ties will be broken applying RRS A8 to the opening series scores.
- 19.8** A boat assigned to compete in a medal race shall make a genuine effort to start, sail the course and finish. The penalty for a breach of this instruction will be ranking the boat tenth in the regatta. If there are two such boats, they will be ranked ninth and tenth, in order of their opening-series ranks, and so on. This changes RRS A2.

- 19.9** The boats competing in a medal race shall be scored highest in the regatta. This may not apply to a boat penalized under RRS 5, 6 or 69.
- 19.10** To request correction of an alleged error in posted race or series results, a boat may complete a scoring enquiry form available at the Race Office.

20 [SP] SAFETY REGULATIONS

- 20.1** Check-Out and Check-In:
- 20.1.1** 2.4m OD boats will be checked out and in by a volunteer on the end of G dock. Boats must also check in with their Race Committee signal boat.
- 20.1.2** Hansa 303 and RS Venture teams will be checked out and back in by a volunteer on their respective docks. Teams must also check in with their Race Committee signal boat.
- 20.2** A boat that retires from racing shall notify the race committee before leaving the racing area, or if that is not possible, shall notify the Race Office as soon as possible after returning ashore but no later than the protest time limit, by completing a retirement declaration form.
- 20.3** Competitor shall wear personal flotation devices at all times as per RMM 8.1
- 20.4** When the race committee displays flag V with repetitive sounds, all official and support boats shall monitor the race committee radio channel for that racing area for search and rescue instructions. The race committee will announce 'Flag Victor' using the designated VHF Channel.

21 REPLACEMENT OF CREW OR EQUIPMENT

- 21.1** Substitution of competitors will not be allowed without prior written approval of the Race committee.
- 21.2** Substitution of damaged or lost equipment will not be allowed unless authorized by the Technical Committee. Requests for substitution shall be made to the committee at the first reasonable opportunity.

22 EQUIPMENT AND MEASUREMENT CHECKS

A boat or equipment may be inspected at any time for compliance with the class rules and sailing instructions. On the water, a boat can be instructed by a race committee equipment inspector or measurer to proceed immediately to a designated area for inspection.

23 [SP] EVENT ADVERTISING

- 23.1** All boats may be required to display identification numbers and/or sponsors advertising for the duration of the event in accordance with World Sailing Regulation 20.4. These items will be supplied free of charge by the Organizing Authority at registration.
- 23.2** Competitors are not permitted to display advertising on supplied equipment or chartered/loaned boats except that which is provided by the Organizing Authority.

24 PRIZES

Prizes will be given for the top three finishers of each division/class.

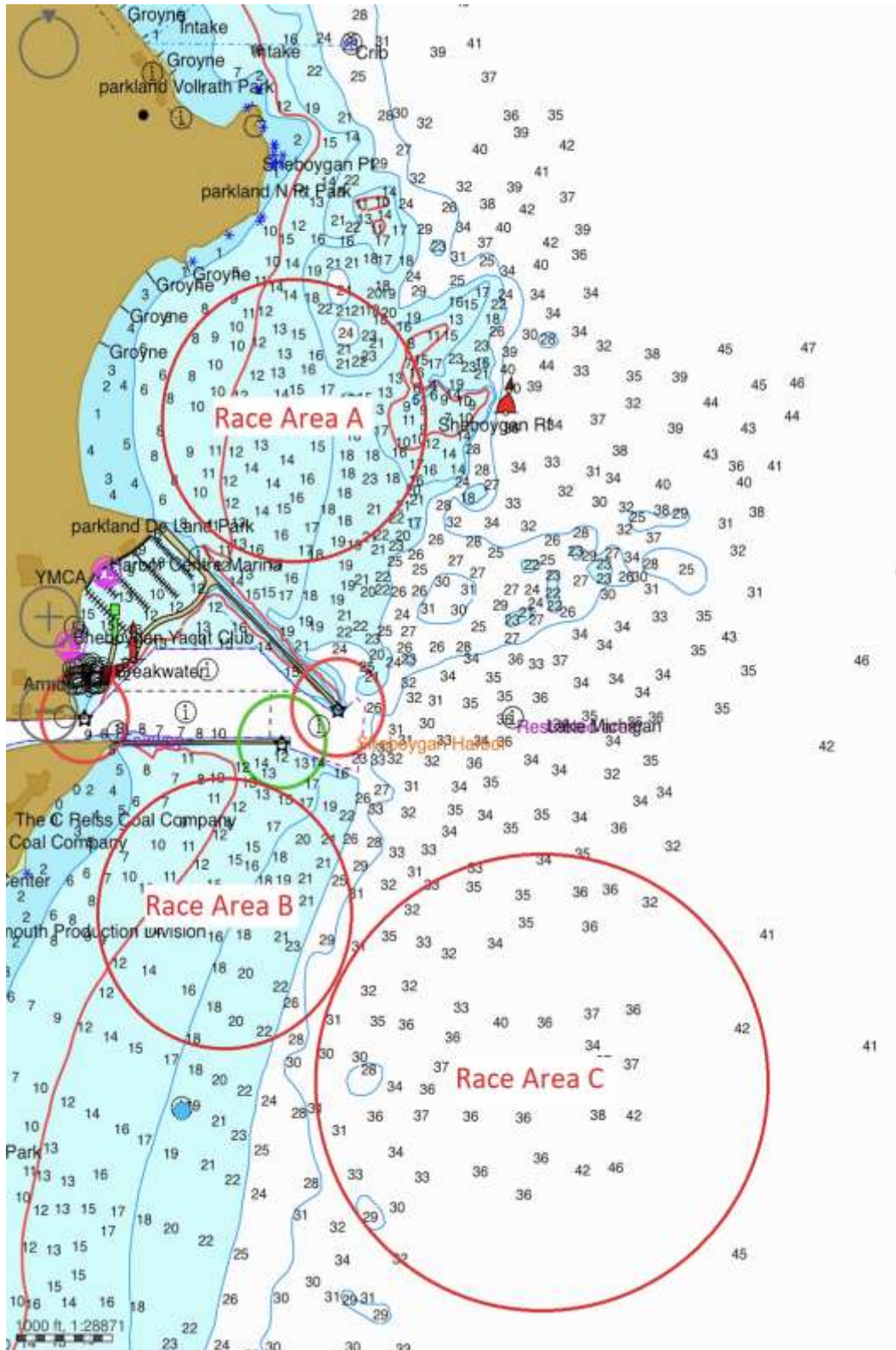
25 RISK STATEMENT

- 25.1** Competitors and support team participate in the series entirely at their own risk and they are reminded of the provisions of RRS 4, Decision to Race. Sailing is by its nature an unpredictable sport and therefore involves an element of risk. By taking part in the event, each competitor agrees and acknowledges that:
- 25.2** They are aware of the inherent element of risk involved in the sport and accept responsibility for the exposure of themselves, their crew and their boat to such inherent risk whilst taking part in the event;
- 25.3** They are responsible for the safety of themselves, their crew, their boat and their other property whether afloat or ashore;
- 25.4** They accept responsibility for any injury, damage or loss to the extent caused by their own actions or omissions;
- 25.5** By participating in any race, they are satisfied that their boat is in good order, equipped to sail in the event and they are fit to participate;
- 25.6** The provision of a race management team, patrol boats, umpires and other officials and volunteers by the organiser does not relieve them of their own responsibilities;
- 25.7** The provision of patrol boat cover is limited to such assistance, particularly in extreme weather conditions, as can be practically provided in the circumstances.
- 25.8** They will familiarize themselves with any venue/event specific risks, adhere to rules and information produced for the venue/event and attend any venue/event safety briefings.

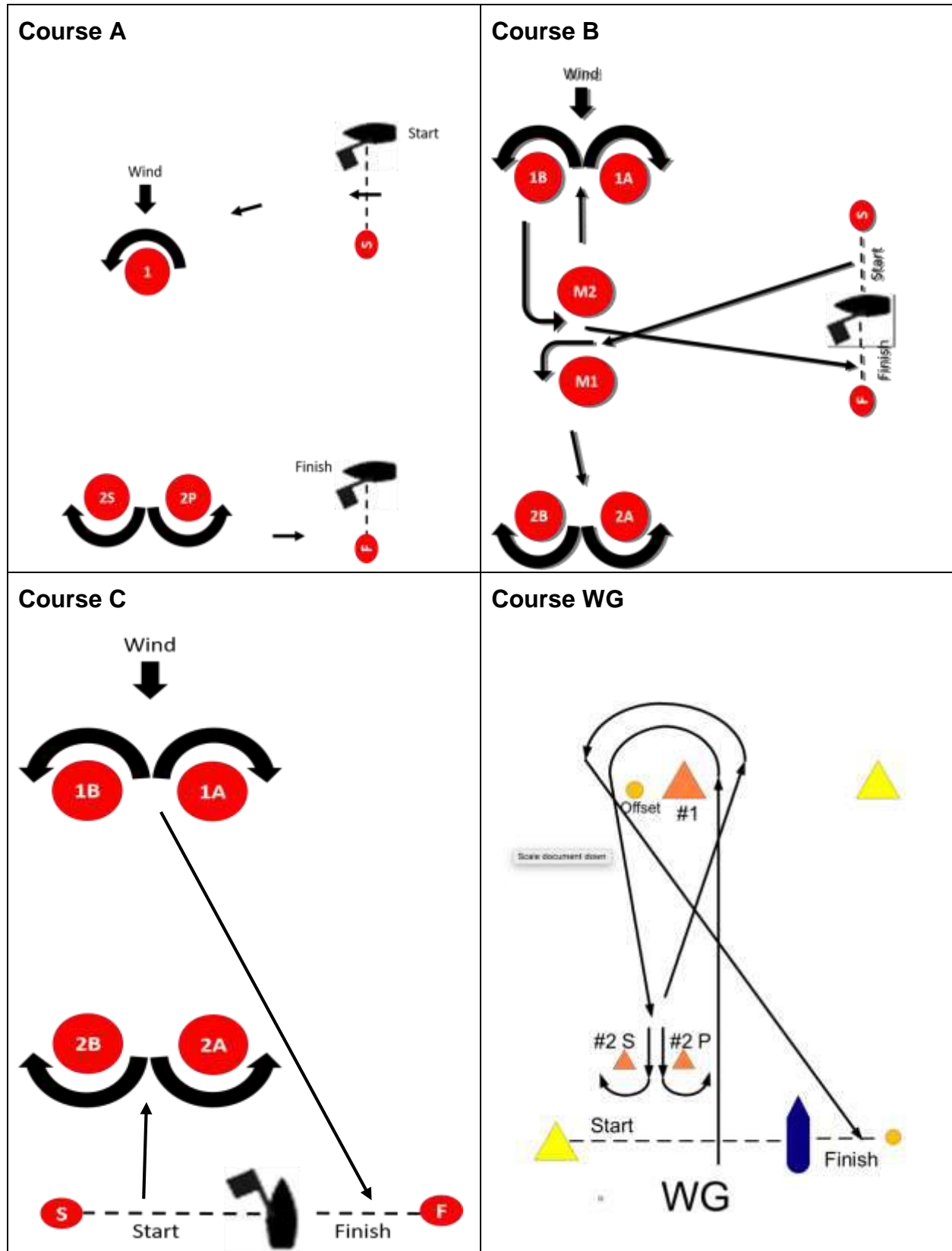
26 [SP] INSURANCE

- 26.1** Each participating boat shall be insured with valid third-party liability insurance with a minimum cover of \$2,000,000 (2 million USD) per incident or the equivalent.
- 26.2** The Organizing Authority is not responsible for verifying the status or validity of certificates

APPENDIX A



APPENDIX B



APPENDIX C

BOATS PROVIDED BY THE ORGANIZING AUTHORITY

1 BOATS

1.1 Boats will be provided for all competitors, who shall not modify them or cause them to be modified in any way except that

- (a) a compass may be tied or taped to the hull or spars;
- (b) wind indicators, including yarn or thread, may be tied or taped anywhere on the boat

1.2 All equipment provided with the boat for sailing purposes shall be in the boat while afloat.

1.3 The penalty for not complying with one of the above instructions will be disqualification from all races sailed in which the instruction was broken.

1.4 Competitors shall report any damage or loss of equipment, however slight, to the organizing authority's representative immediately after securing the boat ashore. The penalty for breaking this instruction, unless the protest committee is satisfied that the competitor made a determined effort to comply, will be disqualification from the race most recently sailed.

1.5 Class rules requiring competitors to be members of the class association will not apply.

1.6 RS Venture Supplied Equipment Regulations will apply for RS Venture class.

APPENDIX D

Discipline: One Person Technical (Open Gender)

Classification: Minimum Disability: 1-7 points eligible

Equipment: 2.4m OD

Format: Traditional Fleet Racing; Windward/Leeward Course; Opening Series determines top 10 (carry points); 1 Medal Race

Discipline: Single Person Non-Technical – Male Single Person Non-Technical – Female

Classification: Minimum Disability: 1-7 points eligible

Equipment: Hansa 303 (Standard Equipment Supplied Shared Charter)

Format: Windward/Leeward courses, target 15-18 min races

Preliminary Series: 3 Groups (Red; Green; Yellow); 2-4 rotations (Red v Green -2 races; Red v Yellow – 2 races; Green v Yellow – 2 races = 1 rotation) = completion of preliminary round. Preliminary Series feeds Quarter-Finals.

Quarter-Finals/Semi-Finals/Final

Quarter-Finals: _____ Top 12 boats, 4 boats from each group to sail in a one race knock out. 8 boats move on to Semi-Finals.

Semi-Finals: One race knock out; top 4 boats move to Finals.

Finals: One race knock out. Top three take medals.

Balance of fleet split into two groups (Silver/Bronze). One race sail-off in each group for final position in fleet. (This would occur prior to Semi-Final and Final).

Discipline: Two Person Keelboat (Open Gender)

Classification: Male/Male team: 8 points total
Male/Female: 9 points total
Female/Female: 10 points total

Equipment: RS Venture Connect with gennaker (Standard Equipment Supplied Shared Charter)

Format: Short Course Heat Style Racing with Late Stage Knock-outs. “Winner Takes All” Final.

The top three teams automatically advance to the next round in the top bracket, while the other three teams get another shot at qualifying in a lucky loser bracket round. Once the competition hits the quarter-final stage, it's a straight knockout right through the semi-final and, ultimately, the final four round that determines the medalists. Brackets to come in separate email.

World Sailing

20 Eastbourne Terrace
London, UK, W2 6LG

Tel: + 44 (0)2039 404 888
para.worldsailing@sailing.org

www.sailing.org

sport / nature / technology



USA 2018
Para
World Sailing
Championships